



成都 *Chengdu*

SC Meeting 20th - Timing & Location

成都

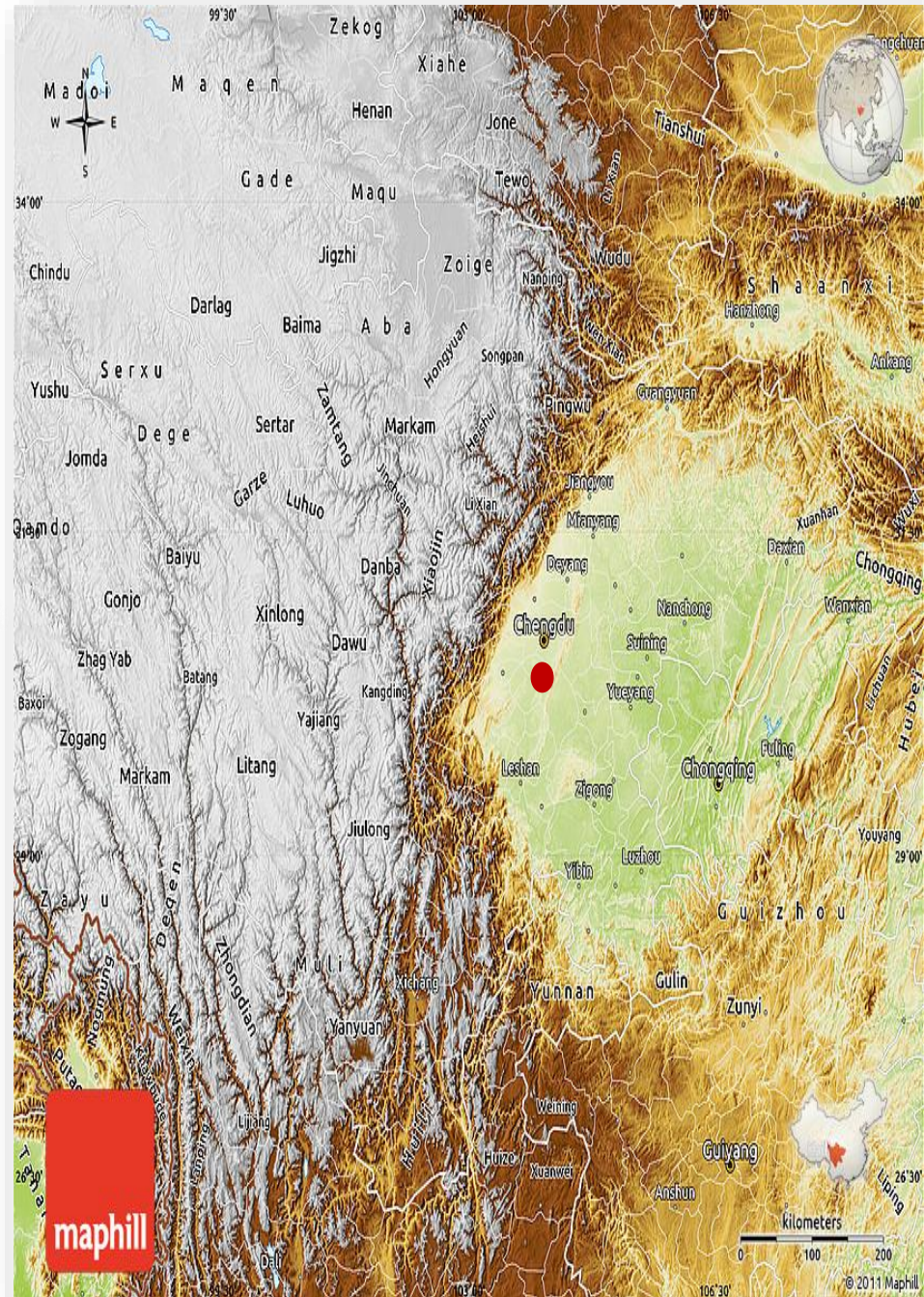
Chengdu

Capital city of Sichuan

Nickname	Country of Heaven 天府之国
Established	331BC
Area	14,378.18 km ² (5,551.45 sq mi)
Elevation	500 m (1,600 ft)
Population	14,427,500

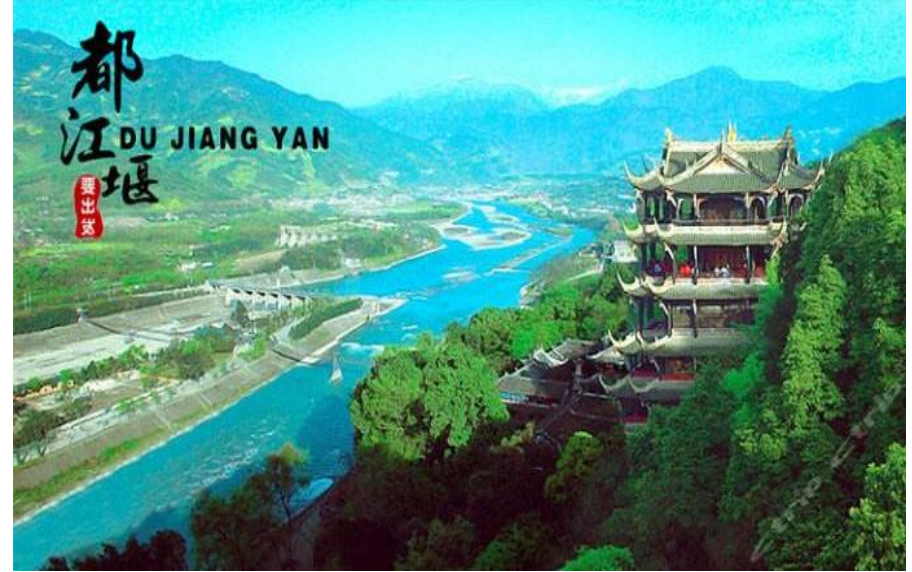


Location in China



Ancient 成都 Chengdu

City of History



Today 成都 Chengdu

Mixture of History & Modern



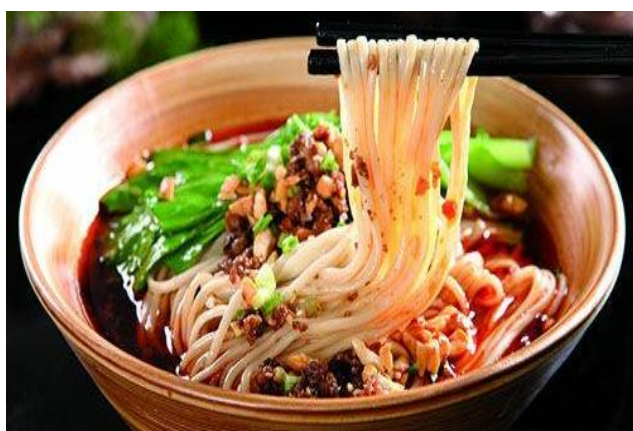
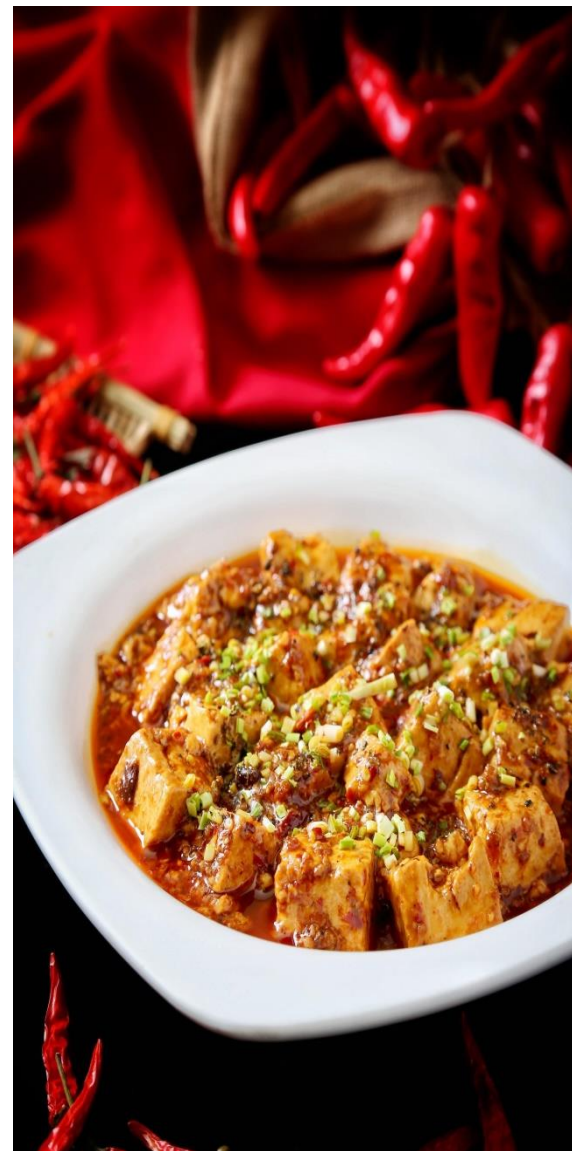
Today 成都
Chengdu

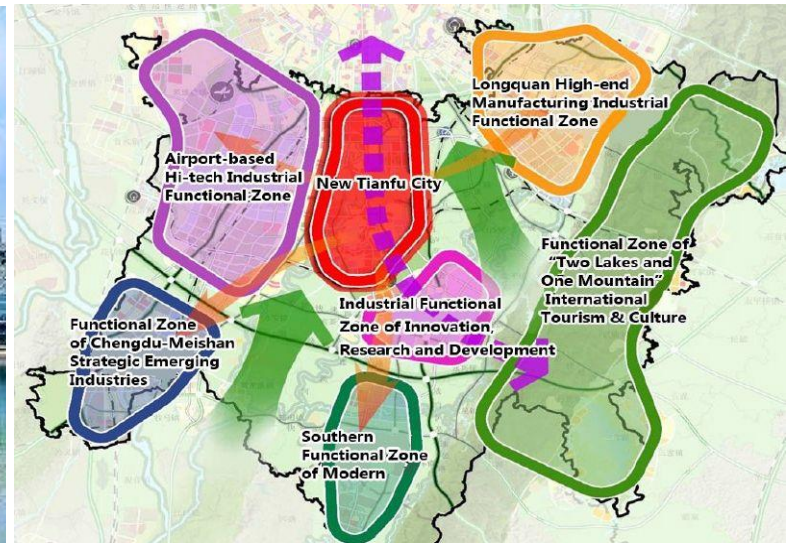
City of Panda



Today 成都
Chengdu

City of Gastronomy





Meeting of IRDR Scientific Committee

Proposed Location: Chengdu



Proposed Field Trip Routes

- **Route A:**

- **Main Site: Dujiangyan Irrigation System**

- Two days:

Dujiangyan → Longchi Forest Park → Hongkou Natural Reserve
→ Wenchuan Earthquake Memorial Museum

- **Route B**

- **Main Site: Jiuzhaigou Valley**

- Three days:

Diexi Dammed Lake → Jiuzhaigou Valley → Wenchuan
Earthquake Memorial Museum

Field Trip Route A, Dujiangyan

Day One



Dujiangyan Irrigation System

Day Two



Hongkou Natural Reserve



Longchi Forest Park

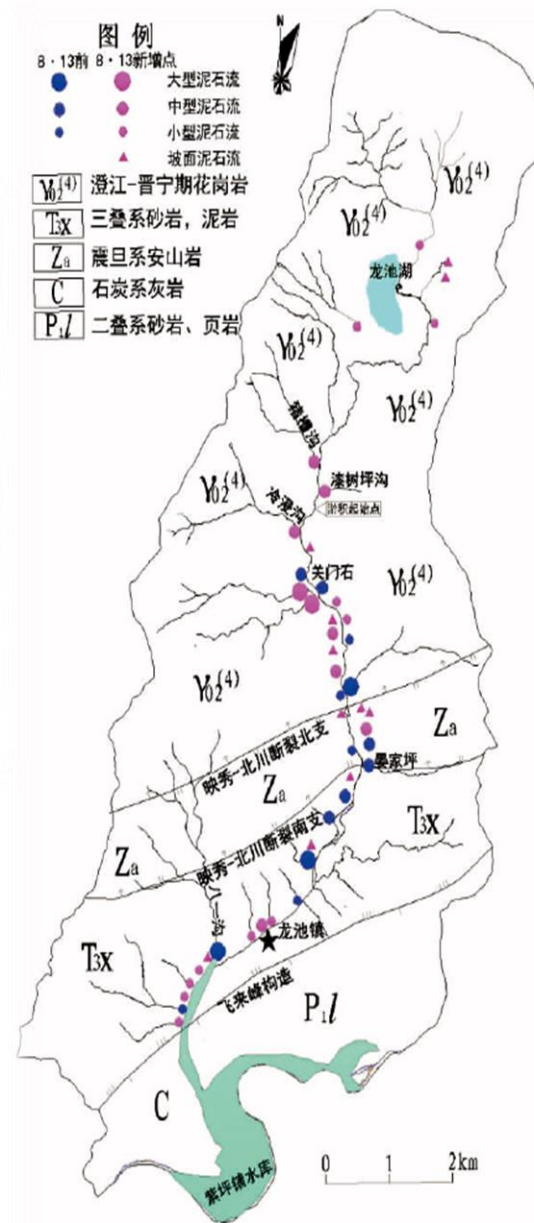


Wenchuan Earthquake Memorial Museum

Debris Flow, Longchi, 2010



Before & After 813 Debris Flow in 2010



泥石流规模与总量关系: 总量 $< 1 \times 10^4 m^3$, 小型; $1 \times 10^4 m^3 \leq$ 总量 $< 10 \times 10^4 m^3$, 中型; $10 \times 10^4 m^3 \leq$ 总量 $< 50 \times 10^4 m^3$, 大型

图2 龙溪河流域及泥石流灾害分布

Field Trip Route B, Jiuzhaigou

Day One:

Diexi Dammed Lake



Day Two:

Jiuzhaigou

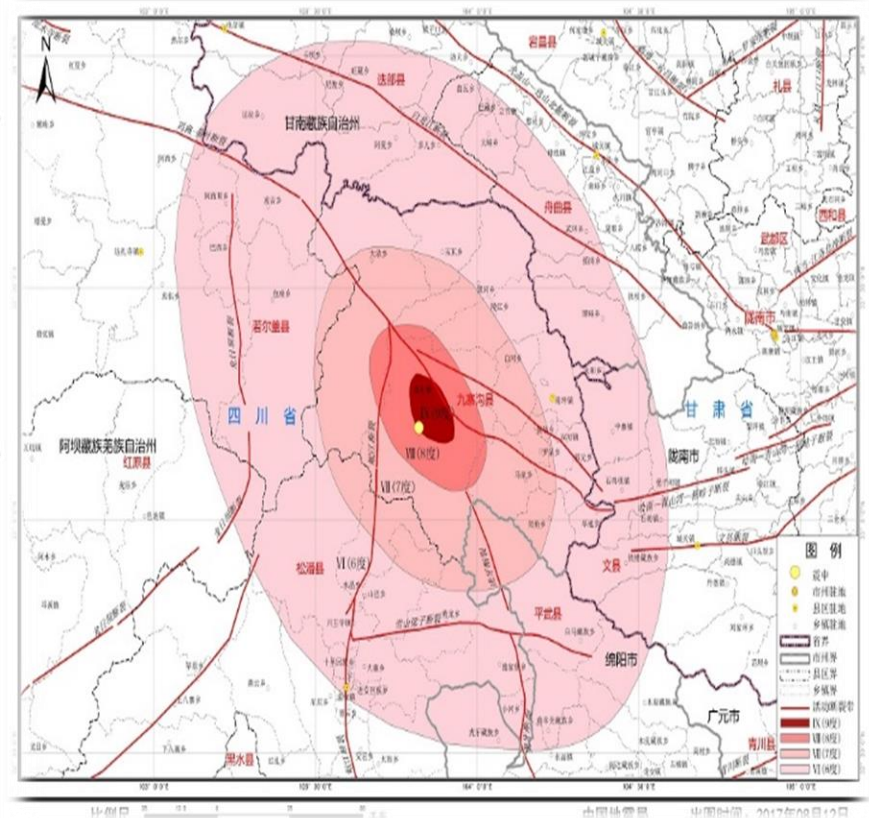
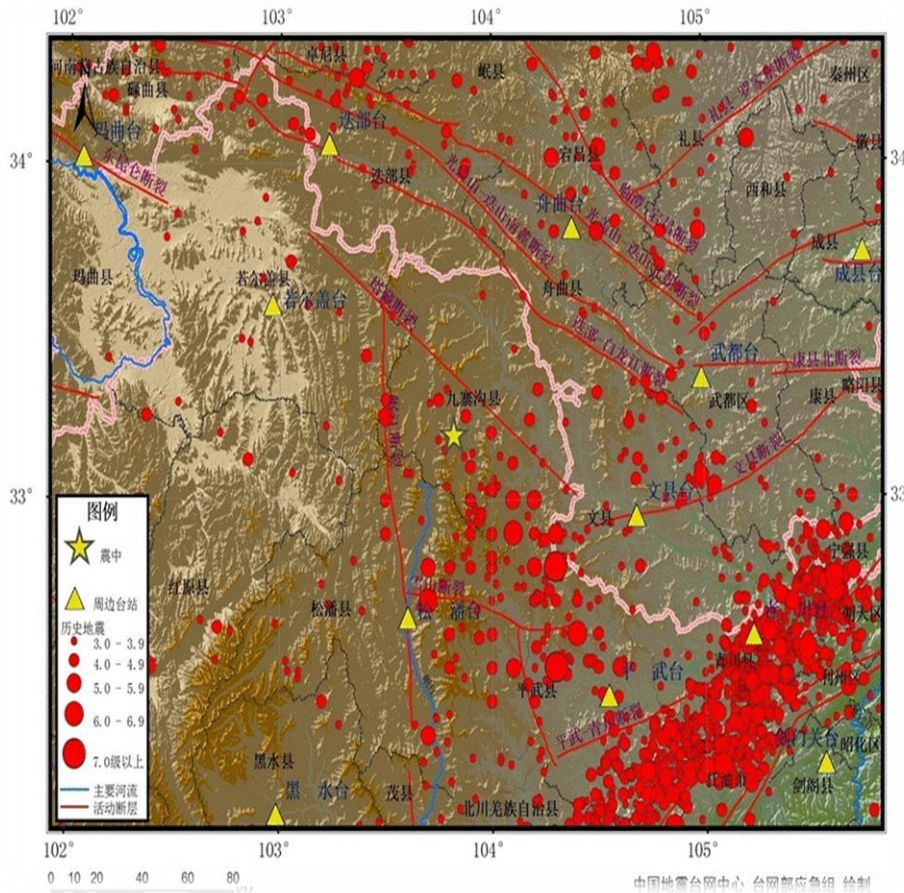


Day Three:

Wenchuan Earthquake Memorial Museum



Jiuzhaigou Earthquake, 2017



M_w 6.5 earthquake occurred 5 km to the west of main scenic spots On August 8, 2017.

**Deaths: 25
Injured: 525
Quake-affected Victims: 176,492
Damaged Buildings: 73,671**

Before & After Earthquake



Sparkling Lake

Nuorilang Waterfalls

Jiuzhai Valley

