

JRC and Disaster Risk Reduction

IRDR Science committee meeting, 11 June 2014

Serving society
Stimulating innovation
Supporting legislation

Scientists
Practitioners
Science communicators
**Cross discipline
communicators**



Science to support policy: DRR

Policy DG's (COM)

DEVCO - Development Aid (Global)

Disaster Risk Reduction

ECHO - Humanitarian Aid (Global)

Preparedness (Qualitative risk assessment)

ECHO - EU Civil Protection (Europe) Losses

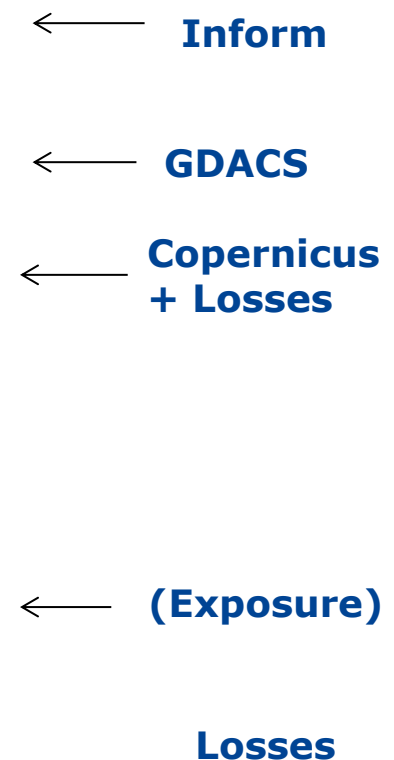
JRC - UNISDR

UNISDR STAG

Probabilistic → 70 countries

GAR Report

IRDR/JRC – MoU → Working Groups



Loss data

IRDR Data Loss, EU Data Loss



European Commission

IRDR EMS - Mapping

Home | What is Copernicus | The Emergency Management Service

Copernicus Emergency Management Service

A service in support of European emergency response

- EMS - Mapping service
- Who can use the service
- How to use the service
- Products: Full/Quick
- Products: Non-rush mode
- Quality control / Feedback
- User guide

4000000000

- List of Activations
- Map of activations
- GeoRSS Feed 1000000000

4000000000

- List of Activations
- Map of activations
- GeoRSS Feed 1000000000

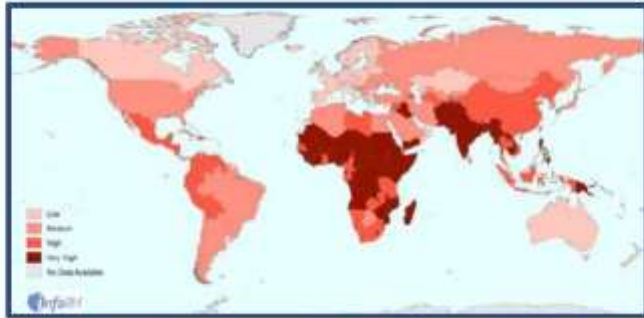
4000000000

- Map of activations of Other Organizations



Map above displays only latest Copernicus EMS - Mapping Activations. To see Map of all Activations go to control Panel of Activations in EMS tools and have a look at the toolbar (bottom right).

InfoRM is a tool...



to identify the countries at a high risk to disasters and humanitarian crises that are more likely to require international assistance

DRR related JRC activities



BACKGROUND PAPER

Prepared for the Global Assessment Report on Disaster Risk Reduction 2015

BUREF – PRODUCING A GLOBAL REFERENCE LAYER OF BUILT-UP BY INTEGRATING POPULATION AND REMOTE SENSING DATA.

Martino Pesaresi¹, Sérgio Freire

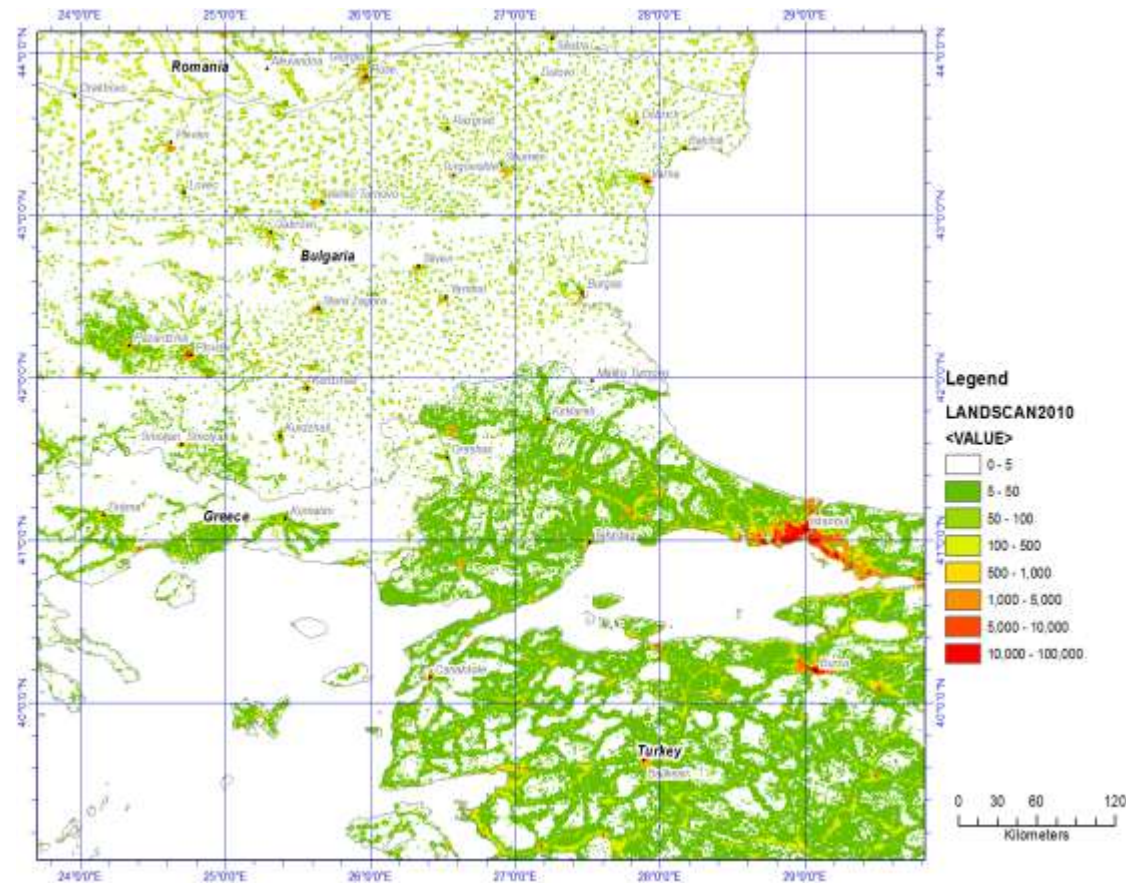
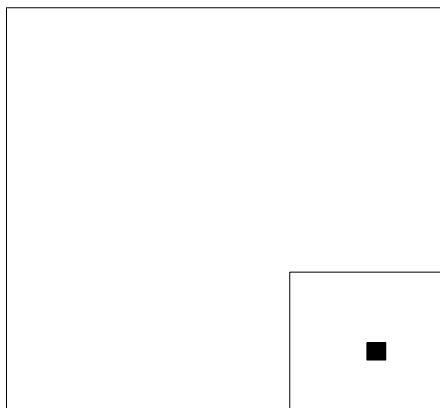


GAR - Exposure

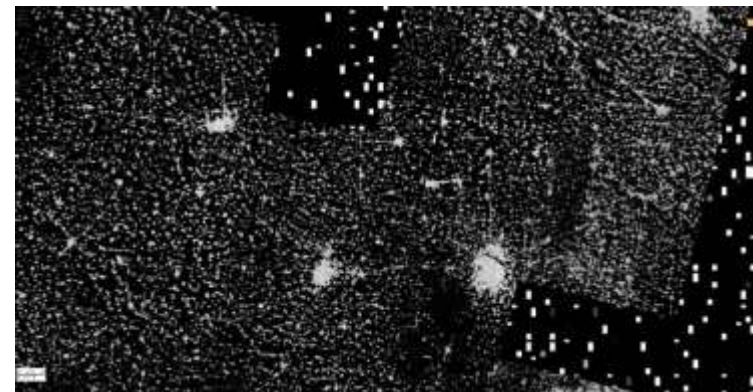
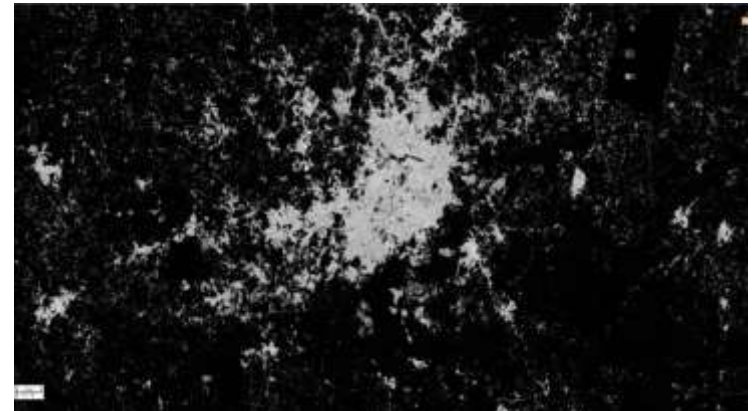
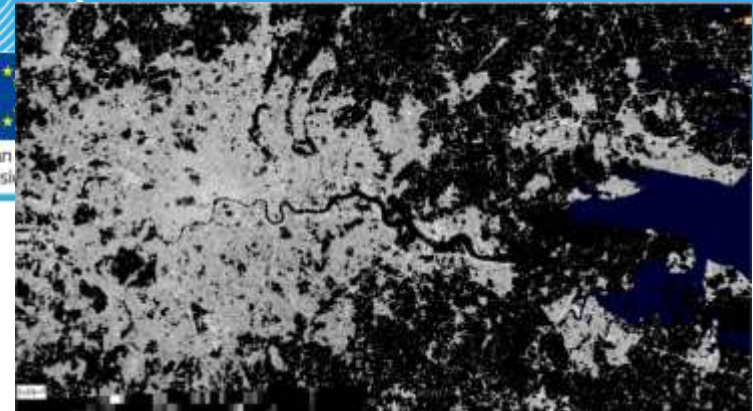
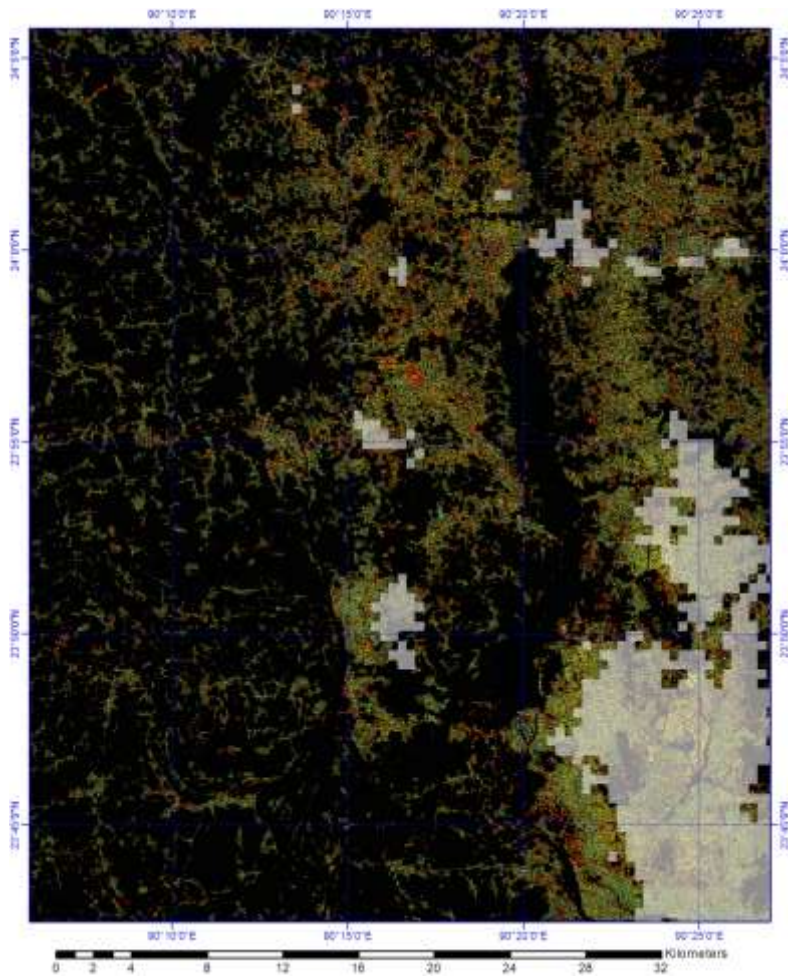
GAR 13 → 5 km

GAR 15 → 1 km

GAR 17 → ?00m



GAR 2015→2017



**GED for GEM, Google, GEO,
Global Human settlement**

11 July 2014

DR data in IRDR Conference 2014

Assessing Risk (June 7)

Global Risk Model

Data and Technology (June 8)

Disaster data, **Data integration**, Hazard risk, **Exposure
Colombia**

Science and the post 2015 Natural Hazard Agenda (June 8)

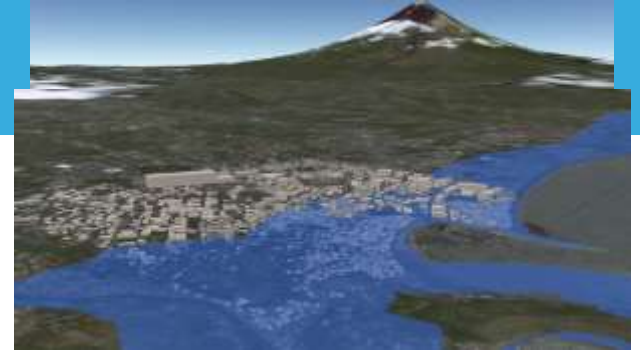
Damages and Losses

Earth Observation for Disaster Risk Reduction (June 9)

CAS-TWAS, Role of GEO, UN-SPIDER, **GFDRR**, UNESCO

Tokyo Declaration

Discussion with Delegates



Integrate more

Integrate Data through modeling
Modelling convinces (GAR, figure)

Integrate projects/initiatives/ programs
Data often are available (free) → GEO (GEM)
IRDR → tell what is needed

Integrate among DRR scientists (social, engineering, physical scientists).

Start working together → Develop a better understanding of each other research **and develop trust**

Best probably around case studies with stakeholder involved