

# IRDR Chinese National Committee (IRDR CHINA)

## IRDR CHINA Progress Updates

Fang CHEN

June 2, 2015 | Qingdao, China





# New IRDR CHINA

A new IRDR Chinese National Committee was launched in Beijing on February 2, 2015.



A group photo of the new committee



The IRDR Executive Director presented at the meeting





# New IRDR CHINA

Aims to deepen the research on integrated disaster reduction, join hands with other disaster related programs in China and develop a think tank for integrated research into disaster risk

- **Prof Huadong Guo**, Director General of RADI, chairs new IRDR CHINA
- **33** members from research institutions, universities, media, state agencies...
- **15** nation-wide scientific associations
- **Top experts** in main areas of disaster risk reduction research, atmospheric sciences, economists, public health, psychologists, and policy.
- **Work plan** for 2015-2017
- **Secretariat** is located at RADI



# Main Tasks of IRDR CHINA

1

Prepare a Strategic Report on  
Integrated Research on Disaster Risk in China

2

Develop a Think Tank for  
Integrated Research into Disaster Risk in China

3

Contribute New Thinking to Integrated Research  
of Disaster Risk Reduction in the world



# IRDR CHINA WGs

## Establish a Number of New Interdisciplinary Working Groups

### WG on Earthquake and Geo-hazard Risk

**Co-chairs:** CUI Peng and WANG Xiaoqing

### WG on Drought and Floods Risk

**Co-chairs:** CHENG Xiaotao and XIA Jun

### WG on Severe Storm Risk

**Co-chairs:** DUAN Yihong and LI Jianping

### WG on Climate Change Driven Disaster

**Co-chairs:** JIA Gensuo and FENG Qiang

### WG on Disaster Risk in Urban Areas

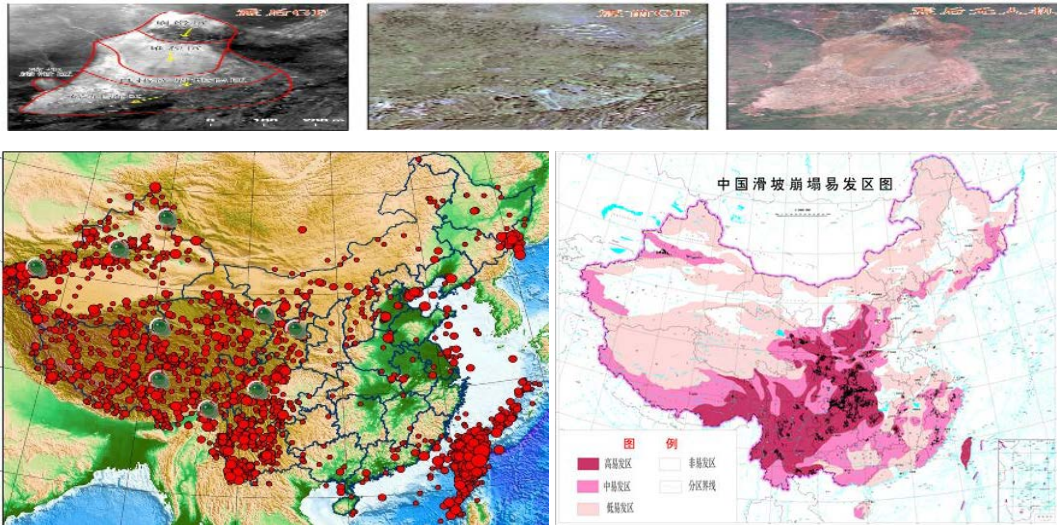
**Co-chairs:** PAN Jiahua

### WG on Assessment of Integrated Research on Disaster Risk in China

**Co-chairs:** CHEN Fang and XUE Lan

# IRDR CHINA WGs

## Methodologies and models of Integrated Research on Disaster Risk for main natural hazards in China



provide science service and support to China's strategy of sustainable development

# IRDR CHINA WGs

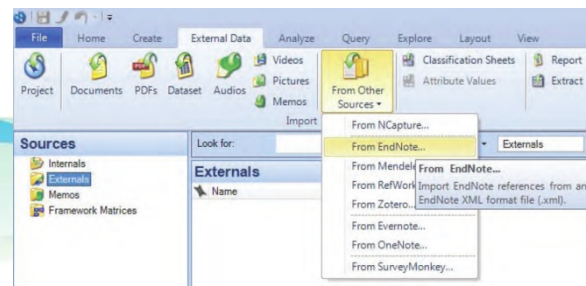
## 1. Concept of AIRDR



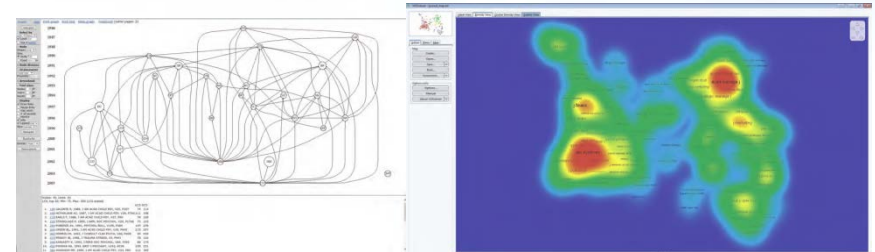
Appendix B: Sample Codes for Topical Areas

Topic	Topic	Topic
Accessibility	Budgeting	Compliance
Accountability	Building Codes	Conditions (Antecedent, Pre-Existing)
Acquisition	Built Environment	Conditions (Future, Modeled, Hypothetical)
Actor/Stakeholder	Bureaucracy	Conflict
Adaptation	Business Continuity	Conflict: Resolution
Adaptive Behaviour	Calibration	Connectivity
Adaptive Capacity	Building/Empowerment	Construction
Adolescent	Capacity: Business	Consumption
Advocacy	Capacity: Community	Cooperation
Aerosols	Capacity: Household	Coping Capacity/Mechanism
Age	Capacity: Individual	Corruption
Aid/Relief: Financial	Capacity: Institutional/Organisational	Cost-Benefit Analysis
Aid/Relief: Food		

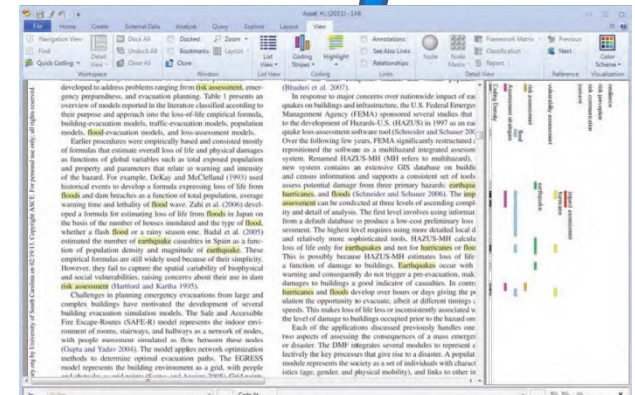
## 2. Content Codes for Chinese literature



## 3. Coding Analysis



## 5. Assessment Report



# Strategic Support: "One Belt One Road"



Neue Seidenstrasse - die Eisenbahnlinie zwischen China und Europa  
絲綢之路 - 中欧铁路大通道



海上丝绸之路



# Strategic Support: “One Belt One Road”



Interviewed by China Central Television for Strategic Development

## 中国科学院文件

科发学部字〔2014〕217号

签发人：白春礼

### 中国科学院关于呈送 《科技助力丝绸之路经济带建设》的报告

国务院：

2013年9月7日，习近平主席出访哈萨克斯坦时，提出了用创新的合作模式共同建设“丝绸之路经济带”的战略倡议。为服务于这一重大战略构想，中国科学院学部于2014年3月设立了“丝绸之路经济带资源环境格局与发展潜力”咨询项目，由郭华东院士牵头组织近30位院士专家开展战略与咨询研究，以期为“丝绸之路经济带”建设提供科技支撑和智力支持。

本咨询项目启动以来，项目组分别调研了新疆、甘肃、陕西、河南和宁夏等五省（区），并在吉尔吉斯斯坦举办的“第二届干旱半干旱区对地观测国际会议”上与国外专家就相关重大

— 1 —

研和多次研究的基础上，项目  
度，取得了一些阶段性的认  
之路经济带建设》咨询报告。  
建设现状与问题进行了分析，  
资源环境格局复杂，发展潜  
沿线区域诉求各异，亟待协调  
一亚国家的科教合作尚缺乏国家  
了如下6方面建议：一是跨越  
式；二是建立与水资源禀赋及  
构建“一轴两翼四核五投”  
— 中亚空间信息通讯技术合作  
经济带一体化的科技合作框架；  
国内段定位与发展战略。  
路经济带建设》咨询报告呈上，请



2014年12月30日

电话：59358363

电话：59358319

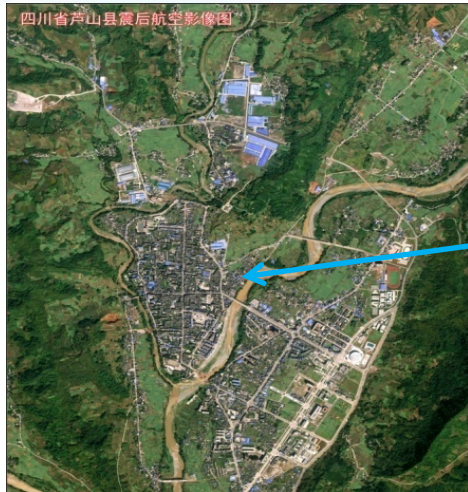
— 2 —



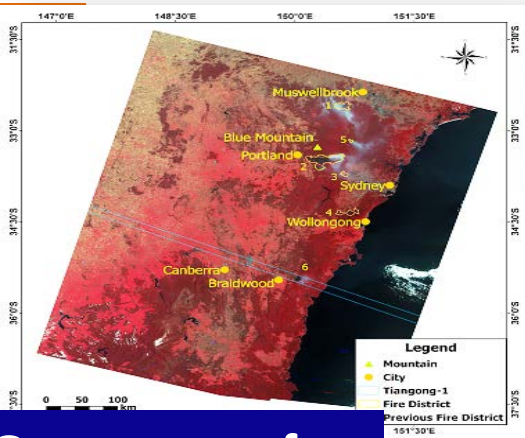
中科院院士卫星遥感专家郭华东  
目前这个地区的经济发展程度



# Strategic Support: “One Belt One Road”



**Aerial remote sensing images produced by RADi were used at a State Council meeting chaired by Premier LI Keqiang on earthquake disaster mitigation in, 2013.**



**Letter of Australian Government for Australian Bushfire support in 2013**

**National Government Awards**

# Strategic Support: “One Belt One Road”



## CAST Seminar for “One Belt One Road’ Collaboration



## Progress Meeting of Future Earth China Committee



## International Symposium on EO for Maritime Silk Road

**International Symposium on Earth Observation for Maritime Silk Road**  
**EMSR** 25-27 November 2015, Sanya, China

**Contact Information**  
 Email: [emsr2015@radiac.cn](mailto:emsr2015@radiac.cn)  
 Website: <http://emsr2015.radiac.cn>  
 Address: Institute of Remote Sensing and Digital Earth (RADI), CAS  
 No. 9 Dengzhuang South Road, Haidian District, Beijing, China

November 2015  
 SUN MON TUE WED THU FRI SAT  
 1 2 3 4 5 6 7  
 8 9 10 11 12 13 14  
 15 16 17 18 19 20 21  
 22 23 24 **25 26 27** 28  
 29 30

2016年5月16-17日, 北京

**主题1：空间信息基础设施与能力建设**

- 区域综合对地观测系统
- 区域虚拟卫星星座与虚拟地面站网
- “所见即所得”的共享服务平台
- 遥感卫星数据处理与应用的能力建设
- 空间信息应用的区域合作机制

**主题2：自然与文化遗产地保护**

- 自然与文化遗产探测、监测与保护
- 自然-文化遗产应用示范
- 自然与文化遗产空间形态数字化重建
- 自然与文化遗产空间信息管理平台

**主题3：空间减灾技术与共享平台**

- 重大自然灾害信息提取和减灾应急响应
- 灾情信息产品快速分发与共享集成
- 灾害时空信息产品与技术共享平台

**主题4：干旱半干旱区资源与环境**

- 农业与水资源格局
- 城镇化与交通布局
- 生态环境与全球变化适应
- 能源与矿产资源配置

**主题5：热带亚热带资源与环境**

- 南海海洋资源与海洋环境
- 湄公河流域生态环境与全球变化

# Meeting & Collaboration Updates

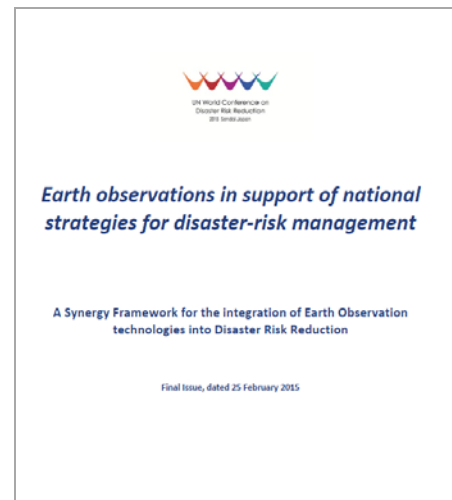


**IRDR CHINA Chair and vice chairs and several members were invited to** attend WCDRR. On the morning of March 15, IRDR CHINA experts discussed at working session “Earth Observations and High Technology to Reduce Risks” and the follow-up seminar with 14 international partners: UNOOSA, GEO, CEOS, ESA, DLR, FAO, and UN-GGIM...



**Ms. Margareta Wahlström, UN Special Representative of the Secretary-General for Disaster Risk Reduction, visited IRDR CHINA Secretariat**

## White Paper for WCDRR



## Working Session at WCDRR



# Meeting & Collaboration Updates



On 3-5 June 2015, in conjunction with the 13th IRDR Science Committee (SC) Meeting and the 2nd plenary meeting of IRDR CHINA, a **roundtable meeting** on IRDR research and policy perspectives and **capacity building workshop for early and mid-career scientists** will be held in Qingdao, China.



IRDR CHINA青年学者国际论坛  
IRDR CHINA CAPACITY BUILDING WORKSHOP

会议手册  
PROGRAMME BOOK

2015年6月4-5日 中国·青岛  
4-5 June 2015 Qingdao, China

IRDR CHINA CAPACITY BUILDING WORKSHOP  
Ocean University of China, Laoshan Campus, Qingdao  
Shandong Province, China  
4-5 June 2015

## AGENDA

IRDR CHINA CAPACITY BUILDING WORKSHOP DAY 1 – THURSDAY, 4 JUNE		
	Integrated research: theory and practice	Suzann Cutter
8:00-12:00	Presentation of IRDR science projects by early-career scientists (2 min, 3 slides): (1) Name-affiliation-field-topic (2) Main research question-key methodology (3) Main curiosity about IRDR  On Risk Interpretation and Action	IRDR China selected participants  David Johnston
12:00-13:30	LUNCH BREAK	
13:30-18:00	IRDR SC faculty proposes three clusters  Three clusters explore IRDR dimensions of participants research projects	Faculty / Participants (Irasema Alcantara-Ayala David Johnston, David Smith)
DAY 2 – FRIDAY, 5 JUNE		
9:00-12:30	Participants present to the plenary first results of their IRDR explorations  Plenary discussion  Clusters reconvene to discuss feedback received	Faculty / Participants
12:30-13:30	LUNCH BREAK	
13:30-18:00	Clusters reconvene to discuss revisions applied by participants and core message of 1-minute statements  Participants present to the plenary their plans for IRDR-inspired research (scope: a paper at the next IRDR conference) : 1 minute each  Certificate Awarding	Faculty / Participants



IRDR CHINA 2015  
CAPACITY BUILDING WORKSHOP

4-5 June 2015  
Qingdao, China

Hosts:  
IRDR Chinese National Committee  
CAS-TWAS Centre of Excellence on  
Space Technology for Disaster Mitigation (SDIM)

Co-organizers:  
Ocean University of China  
Qingdao Collaborative Innovation Center of  
Marine Science and Technology

# Recent Research Collaboration Updates



The Natural Environment Research Council (NERC), the Economic and Social Research Council (ESRC) and the National Natural Science Foundation of China (NSFC) are opening research proposals on **Increasing Resilience to Natural Hazards in Earthquake Prone Regions in China (IRNHIC)**.

**NERC** SCIENCE OF THE ENVIRONMENT


Home Funding Research Innovation Skills News, Events & Publications About Us

Home / Research / Funded research / Research programmes / Increasing Resilience to Natural Hazards in Earthquake Prone & Volcanic Regions

## Increasing Resilience to Natural Hazards in Earthquake Prone & Volcanic Regions

- Programme overview

Earthquakes and volcanoes cause enormous human suffering and economic damage, accounting for the loss of millions of lives, and at a cost of billions of dollars. Further research effort is needed to enhance the understanding of the physical processes behind such natural hazards, but also their effects and implications for their prediction and mitigation.



This interdisciplinary programme aims to build resilience in earthquake-prone and volcanic regions by reducing risks from multiple natural hazards, increasing population resilience to high impact events, particularly as they increase in severity and frequency.

A strong interdisciplinary approach to research throughout this programme aims to improve forewarned uptake of scientific advice and increase understanding of vulnerability and risk.

- Programme news

**Increasing Resilience to Natural Hazards In Earthquake-Prone regions in China, Announcement of Opportunity: Research funding**

21 Apr 2015

Expression of interest applications are invited for the IRNHIC programme, funded by NERC and the UK (supported by the Newton Fund) and the National Natural Science Foundation of China.

**Newton Fund**

**NERC** SCIENCE OF THE ENVIRONMENT

**ESRC** ECONOMIC & SOCIAL RESEARCH COUNCIL

**NSFC** National Natural Science Foundation of China

### Increasing Resilience to Natural Hazards in Earthquake Prone Regions in China (IRNHIC) a UK-China collaboration

#### Announcement of Opportunity (AO)

Closing date for Expressions of Interest (via e-mail): 09.00hrs UK (GMT+1) /16.00 China (CST) on 9th June 2015

Closing date for invited full proposals via JeS: 16.00hrs UK GMT+1 20th August 2015

#### 1. SUMMARY

The Natural Environment Research Council (NERC), the Economic and Social Research Council (ESRC) and the National Natural Science Foundation of China (NSFC) are inviting research proposals under a new strategic, science-led research programme, Increasing Resilience to Natural Hazards in Earthquake Prone Regions in China (IRNHIC), which aims to increase social and

**“Integrate Natural and Social Science”**

# Recent Research Collaboration Updates



**Mark Pelling**  
IRDR SC member  
Professor  
King's College London  
UK



**Bruce Malamud**  
Professor of Natural &  
Environmental Hazards  
King's College London  
UK

**UK Scientific Community (British Geologic Survey ....)**



**IRDR CHINA WG on  
Earthquake and  
Geo-hazard Risk**



**Assessing the vulnerability of  
earthquake-triggered geological  
hazards in southwest China through  
integrated approach**

# Recent Research Collaboration Updates



The **International Society for Digital Earth** (ISDE), founded in May, 2006 in Beijing, is a scientific international organization principally **promoting** academic exchange, science and technology innovation, education, and international collaboration towards Digital Earth.

ISDE Website: [www.digitalearth-isde.org](http://www.digitalearth-isde.org)

- The **International Journal of Digital Earth** (IJDE) is the academic journal of the International Society for Digital Earth, jointly published by the Taylor & Francis Group.
- The IJDE was launched in March 2008, and accepted for coverage in the Science Citation Index Expanded (**SCI-E**) in August 2009.

IJDE Online Submission: <http://mc.manuscriptcentral.com/ijde>



**Impact Factor 2.212**

\*The ISDE Secretariat and the IJDE Editorial Office are hosted by the **Institute of Remote Sensing and Digital Earth (RADI)**, Chinese Academy of Sciences.





Thank you !